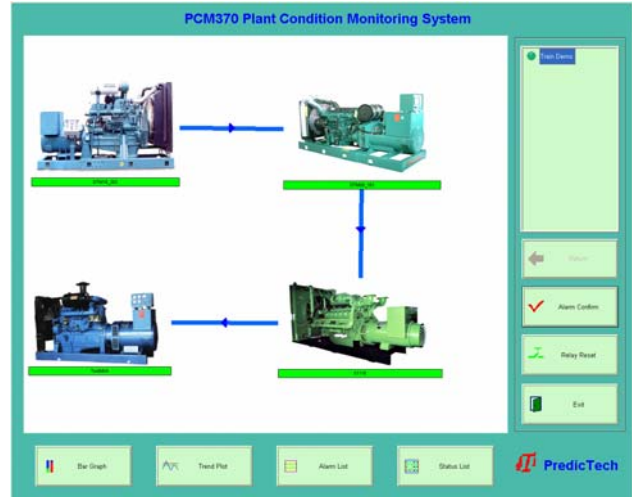




## PT2060/98 DISP Display System

Pro vibTech's PT2060/98 DISP display system is a powerful touch-panel display loaded with PCM370 vibration analysis system software. The PT2060/98 DISP connects to the PT2060 system via Modbus. The PCM370 software will collect, store, analyze and display the machinery status data locally or to a wide area network.

- ✓ ID each channel, and arrange the routing
- ✓ Setup data collection strategy
- ✓ Display machine photo and real-time data and status on top of the photo
- ✓ Real-time bar graph/ status list/ alarm status of each channel
- ✓ Alarm events
- ✓ Trend plot on each channel
- ✓ Touch-panel for easy operation
- ✓ Network to control systems (PLC/DCS or Historian) via Modbus



### Specifications

#### Electrical

Touch Screen PC power supply:

24VDC: From 20 to 30VDC @20A

Power adaptor for touch panel

110VAC: From 85 to 132VAC. Frequency from 47Hz to 63 Hz @4A

230VAC: From 175 to 264VAC. Frequency from 47Hz to 63Hz @4A

#### Environmental

Temperature:

Operation: 0°C to +60°C

Storage: -20°C to +85°C

Humidity:

95% non-condensing

IP rating:

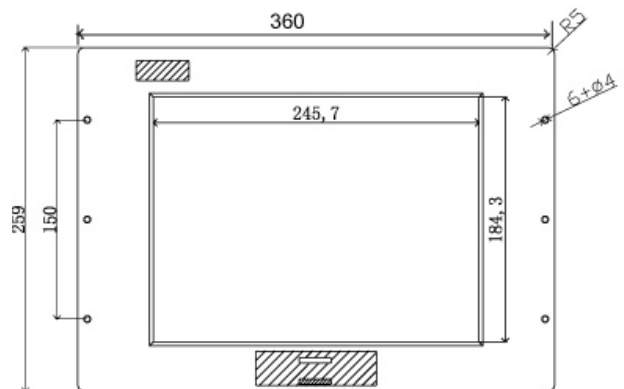
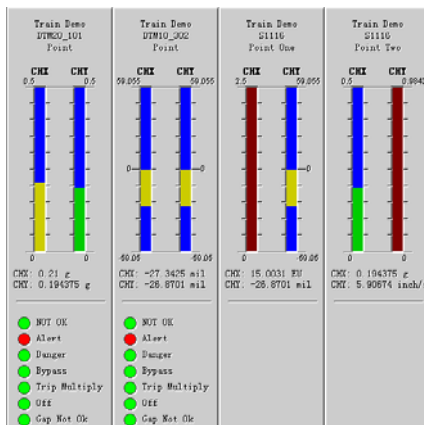
IP65

#### Physical

Touch panel, color 12" PC

Mounting size: H: 259 mm (10.2")

W: 360 mm (14.2")



259 mm (10.2") X 360 mm (14.2")

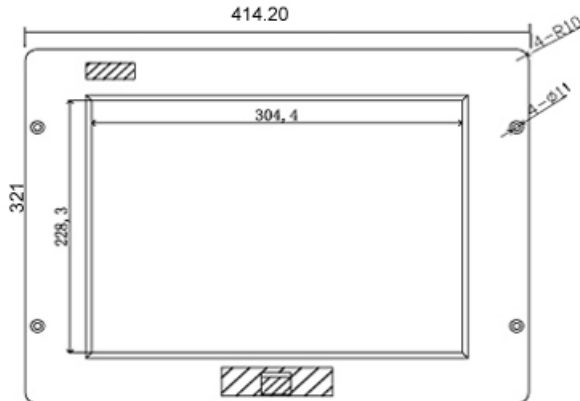


## Physical continued

Touch panel, color 15" PC

Mounting size: H: 321 mm (12.6")

W: 414.20 mm (16.3")



321 mm (12.6") X 414.20 mm (16.3")

## Accessories

### **PCM-TOUCH:**

PCM-T-15-230 (15", 230VAC)

PCM-T-15-110 (15", 110VAC)

PCM-T-12-230 (12", 230VAC)

PCM-T-12-110 (12", 110VAC)

### **PT2060-98-02:**

110VAC Power adaptor for PCM-TOUCH

### **PT2060-98-03:**

230VAC Power adaptor for PCM-TOUCH

### **PT2060-CFG:**

Configuration software for PT2060 system

### **PCM370-AX-BX-CX-DX:**

Full version of PCM370

## Order Information

### **PT2060/98-AX-BX**

AX: Software option

A0: Single user (includes)

- ✓ PCM370-A0-B0-C0-D1 single user
- ✓ RS485-USB converter

BX: Touch panel

B0: No touch panel

B1: 15" Touch panel with 230VAC power adaptor

B2: 15" Touch panel with 110VAC power adaptor

B3: 12" Touch panel with 230VAC power adaptor

B4: 12" Touch panel with 110VAC power adaptor