



PT2060-CFG System Configuration Software

PT2060-CFG is the “easy to use” system configuration software tool used to set up and monitor the PT2060 system. The software requires Windows XP or Windows 2000 operating system. PT2060-CFG provides the following functions:

System Configuration

- System Setup
- Rack Communication
- Modbus Communication
- Calibration of the system, module and channels

Module Configuration

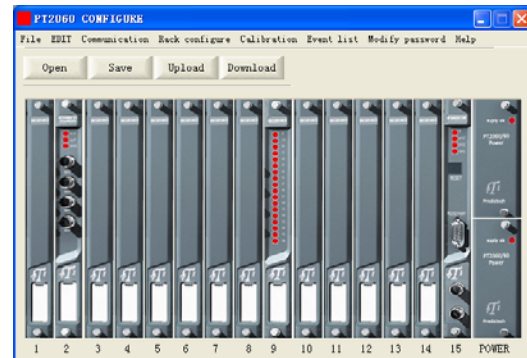
- Trip Multiply
- Alarm Inhibit
- Bypass
- Module Reset

Channel Configuration

- Full Scale Range
- Alarm Set- Point
- Calibration of the System

Reporting

- Alarm and System Events
- Real Measurement Values
- Channel, Module and Rack Status



Order Information

PT2060-CFG

Includes:

- Configuration software CD
- RS232-USB cable
- Manual