



DTM Distributed Transmitter Monitor

DTM-CFG Configuration and Calibration Software

DTM-CFG is the configuration and calibration software used to configure all DTM modules. DTM-CFG works with Windows XP or Windows 2000 operating system.

DTM-CFG can be connected to the DTM modules with the interface of a RS485-USB cable kit.

DTM-CFG combined with the DTM96 allows the user to remotely interface with 32 DTMs networked together in the field.

DTM-CFG Features

- ✓ DTM Configuration
- ✓ DTM Calibration

Specifications

Module Configuration:

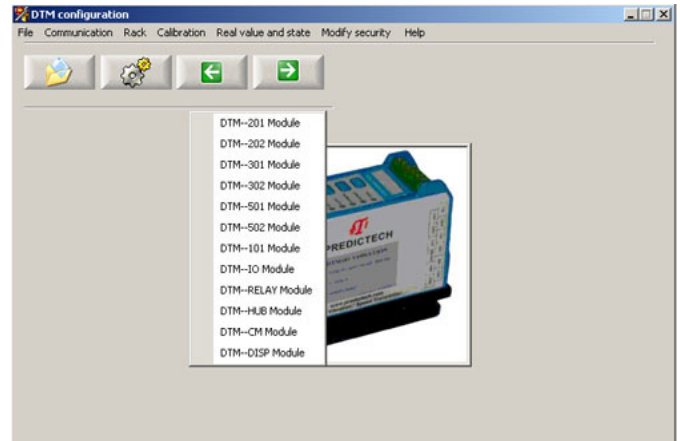
- ✓ Module type selection
- ✓ Modbus ID address, Range
- ✓ Communication baud rate
- ✓ Auto manual search of communication port
- ✓ English or metric selection
- ✓ Password and security

Operation Configuration:

- ✓ Sensor and sensitivity selection
- ✓ Measurement unit selection
- ✓ Full-scale
- ✓ Dual-alarm set-points, time delay, latching
- ✓ Relay energized/de-energized. Relay programmed to Alert or OK
- ✓ OK set-points

Maintenance Calibration:

- ✓ ZERO calibration, SPAN calibration
- ✓ Probe linearization calibration
- ✓ Real-time overall and status display
- ✓ Record of overall and status
- ✓ Configuration parameter save as file



Order Information

DTM-CFG-K

DTM configuration and calibration software kit includes:

- ✓ DTM-CFG configuration and calibration software CD
- ✓ RS485-USB converter with cable
- ✓ User manual

DTM-CFG

DTM configuration and calibration software includes:

- ✓ DTM-CFG configuration and calibration software CD
- ✓ User manual

DTM-CAL

The DTM field calibration kit with probe calibration capability with any 5mm, 8mm and 11mm probe system. The kit includes:

- ✓ DTM-CFG configuration and calibration software CD
- ✓ RS485-USB converter with cable
- ✓ TM0540 proximity probe field calibration kit
- ✓ User manual

Optional Accessories

RS485-USB: RS485 to USB converter with cable

RS232-USB: RS232 to USB converter with cable

DTM96: Isolated communication module

TM0540: Proximity probe field calibration kit

TM0541: Proximity probe shaft calibration kit.