

## Thermal Problem Detail Report

**Site:** Ennis Extruded Products

**Problem Status:** OPEN 😞

**Location:** MCC 5

**Equipment:** Section D

**Voltage:** 480 **Barcode:**

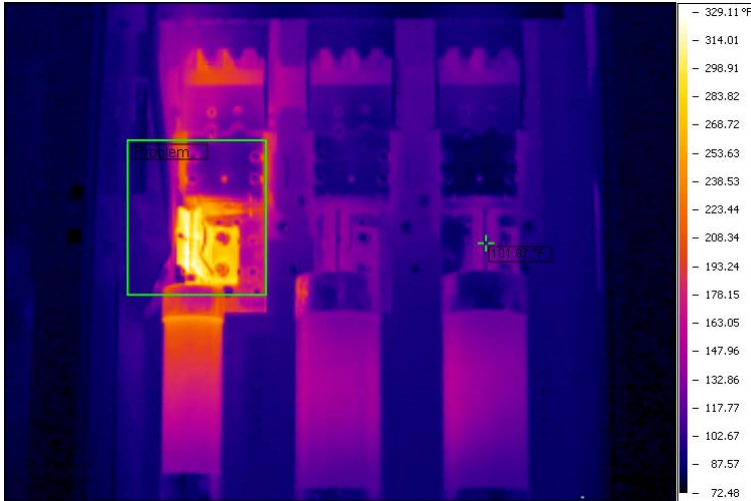
**Rated Load:** 225 **Asset ID:**

**IDN File:** 2c81247a-5f90-4167-b6ea-59519c87583c.idn

**Severity:** 1

**Work order #:**

|   |                  |
|---|------------------|
| <b>Inspection#:</b> 1                       | <b>Prob#:</b> 19 |
| <b>Prob Date&amp;Time:</b> 11/18/2008 13:51 |                  |
| <b>Indirect Temp.Measurement:</b> No        |                  |
| <b>Component Temp.:</b> 329.7@78.4%         |                  |
| <b>Reference Temp.:</b> 101.9@78.4%         |                  |
| <b>Temp.Rise:</b> 227.8@78.4%               |                  |



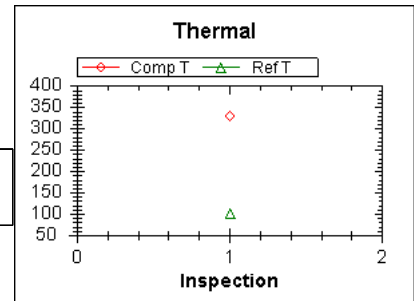
**Component:** Section D1 Quincy East - A Phase Fuse Clip

**Probable Cause:** Loose fuse clip on the 'A' phase line side. Also, mismatched fuses.

**Recommendation:** Clean and tighten fuse clip. Replace as necessary.

**Historical Sub Report**

| Insp.# | Prob.# | Date       | Comp Temp | Ref. Temp | Temp Rise | Sev. Code | Load  | % Load | Wind Spd. | Amb. Temp |
|--------|--------|------------|-----------|-----------|-----------|-----------|-------|--------|-----------|-----------|
| 1      | 19     | 11/18/2008 | 329.7     | 101.9     | 227.8     | 1         | 176.5 | 78.4%  |           | 70.0      |



|                          |                                       |  |                                 |
|--------------------------|---------------------------------------|--|---------------------------------|
| Problem Status:          | <input type="checkbox"/> Not repaired | <input type="checkbox"/> Repair made, but needs IR recheck | <input type="checkbox"/> Closed |
| Repair assigned to:      | Repair target date:                   |  |                                 |
| Repair assigned by:      | Date:                                 |  |                                 |
| Repaired by:             | Date:                                 |  |                                 |
| Type of defect found:    |                                       |  |                                 |
| Corrective action taken: |                                       |  |                                 |



**Prioritized List by Temperature Rise  
Inspection # 1**

**Site:** Ennis Extruded Products

|  |                 |                         |                         |              |               |
|--|-----------------|-------------------------|-------------------------|--------------|---------------|
| <b>Problem # 19</b>  | <b>Barcode:</b> | <b>Temp Rise:</b> 227.8 | <b>% Load:</b> 78.4%    |              |               |
|  |                 |                         | <b>Temp</b>             | <b>Phase</b> | <b>Load</b>   |
|  |                 |                         | <b>Component:</b> 329.7 | A Phase      | 176.5<br>amps |
| <b>Location:</b> MCC 5                                       |                 |                         | <b>Reference:</b> 101.9 | C Phase      | 176.4<br>amps |
| <b>Equipment:</b> Section D                                  |                 |                         | <b>Threshold:</b>       |              |               |
| <b>Component:</b> Section D1 Quincy East - A Phase Fuse Clip |                 |                         | <b>Ambient:</b> 70.0    |              |               |
| <b>IDN File:</b> 2c81247a-5f90-4167-b6ea-59519c87583c.idn    |                 |                         | <b>Wind Speed:</b> 0    |              |               |
|  |                 |                         | <b>Rat.Load:</b> 225 A  |              |               |
|  |                 |                         | <b>Severity:</b> 1      |              |               |

|  |                 |                         |                         |              |             |
|--|-----------------|-------------------------|-------------------------|--------------|-------------|
| <b>Problem # 20</b>  | <b>Barcode:</b> | <b>Temp Rise:</b> 211.1 | <b>% Load:</b> N/A      |              |             |
|  |                 |                         | <b>Temp</b>             | <b>Phase</b> | <b>Load</b> |
|  |                 |                         | <b>Component:</b> 314.2 | C Phase      |             |
| <b>Location:</b> MCC 4   |                 |                         | <b>Reference:</b> 103.1 | A Phase      |             |
| <b>Equipment:</b> Section D  |                 |                         | <b>Threshold:</b>       |              |             |
| <b>Component:</b> D1 #9 Chiller - C Phase Blade Port/Fuse Connection |                 |                         | <b>Ambient:</b> 70.0    |              |             |
| <b>IDN File:</b> 27d45062-dd32-4f76-b34f-d2c74d3cb69a.idn            |                 |                         | <b>Wind Speed:</b> 0    |              |             |
|  |                 |                         | <b>Rat.Load:</b> 400 A  |              |             |
|  |                 |                         | <b>Severity:</b> 1      |              |             |

|  |                 |                         |                         |              |               |
|--|-----------------|-------------------------|-------------------------|--------------|---------------|
| <b>Problem # 5</b>   | <b>Barcode:</b> | <b>Temp Rise:</b> 198.2 | <b>% Load:</b> 39.1%    |              |               |
|  |                 |                         | <b>Temp</b>             | <b>Phase</b> | <b>Load</b>   |
|  |                 |                         | <b>Component:</b> 308.3 | C Phase      | 117.3<br>amps |
| <b>Location:</b> Line 4 Area   |                 |                         | <b>Reference:</b> 110.0 | A Phase      | 125.2<br>amps |
| <b>Equipment:</b> Line 4B EXT.BCPANEL Control Cabinet                |                 |                         | <b>Threshold:</b>       |              |               |
| <b>Component:</b> Main 300amp Breaker - C Phase Load Side Connection |                 |                         | <b>Ambient:</b> 70.0    |              |               |
| <b>IDN File:</b> 8c035410-8913-4db4-ad0e-cbb7eeb6aa2c.idn            |                 |                         | <b>Wind Speed:</b> 0    |              |               |
|  |                 |                         | <b>Rat.Load:</b> 300 A  |              |               |
|  |                 |                         | <b>Severity:</b> 1      |              |               |

|  |                 |                         |                         |              |              |
|--|-----------------|-------------------------|-------------------------|--------------|--------------|
| <b>Problem # 44</b>  | <b>Barcode:</b> | <b>Temp Rise:</b> 145.0 | <b>% Load:</b> 60.5%    |              |              |
|  |                 |                         | <b>Temp</b>             | <b>Phase</b> | <b>Load</b>  |
|  |                 |                         | <b>Component:</b> 234.9 | T1           | 12.1<br>amps |
| <b>Location:</b> Control Room #2                                     |                 |                         | <b>Reference:</b> 89.9  | field        |              |
| <b>Equipment:</b> EXT 13AC Panel Control Cabinet                     |                 |                         | <b>Threshold:</b>       |              |              |
| <b>Component:</b> 30 FU fuse - load side fuse clip and/or connection |                 |                         | <b>Ambient:</b> 64.0    |              |              |
| <b>IDN File:</b> 27f4f2ad-8248-4406-bcdc-48fc2c1081e1.idn            |                 |                         | <b>Wind Speed:</b> 0    |              |              |
|  |                 |                         | <b>Rat.Load:</b> 20 A   |              |              |
|  |                 |                         | <b>Severity:</b> 1      |              |              |

